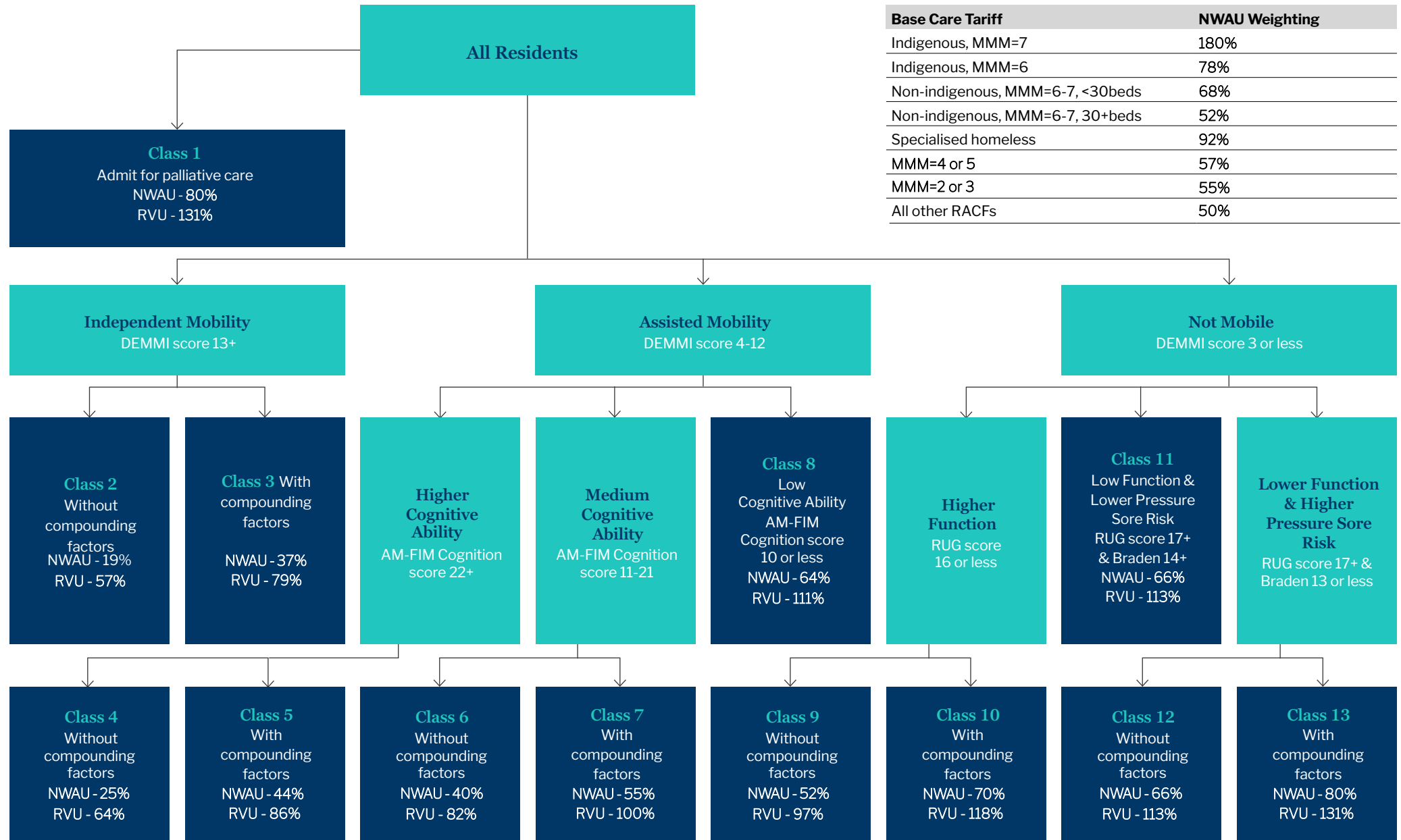


The Australian National Aged Care Classification (AN-ACC)



Base Care Tariff	NWAU Weighting
Indigenous, MMM=7	180%
Indigenous, MMM=6	78%
Non-indigenous, MMM=6-7, <30beds	68%
Non-indigenous, MMM=6-7, 30+beds	52%
Specialised homeless	92%
MMM=4 or 5	57%
MMM=2 or 3	55%
All other RACFs	50%

ABBREVIATIONS
Admit for palliative care A life expectancy of three months or less

DEMMI De Morton Mobility Index
AM-FIM Australian Modified Functional Independence Measure

RUG-ADL Resource Utilisation Groups – Activities of Daily Living
Braden The Braden Scale

NWAU National Weighted Activity Unit
RVU Relative Value Unit – a measure of relative resource consumption (staff time or dollars)